



Vaelma®
MODULAR WALL SYSTEM

Turn Key Solutions

GMP Cleanrooms

2021

The operating theatre
has always been a unique
place designed for saving lives.
The more it evolves,
the more lives can be saved.



Contents

Company

Human resources.....	3
Company profile	4

Services

Planning	6
Project Management	7
Certifications – ISO and GMP.....	8
Medical equipment planning.....	8

Construction

Vaelma Modular Wall System	9
Ceiling System	16
Hermetically sealed Doors	18
Floor System	19
Air Conditioning - Laminar Flow System	20
Medical gases.....	21
Visualization	22

Projects

Selected projects.....	23
Reference list	39



Company / Human resources

The scientific personnel is well educated in European universities and specialized in medical construction. We participate in medical field exhibitions: MEDICA (Dusseldorf, DE), ARAB HEALTH (Dubai, UAE).

Ioannis Ioannidis, C.E.O.

Dipl. Mechanical Engineer

University of Darmstadt, Germany (GR, D, EN)

Dimitrios Kapsalis, Design Dept. manager

Dipl. Architect Engineer

Aristotle University of Thessaloniki (GR, EN, IT)

Panagiotis Katsikaridis, Engineering Dept. manager

Dipl. Civil Eng / MSc in Transport

Aristotle University of Thessaloniki / Imperial College London (GR, EN, F)

Nikolaos Kanteres, Supervisor

MSc Eng. at Urban Planning and Regional Development

University of Thessaly (GR, EN)

Stavros Kementsetsidis, Junior project manager

Dipl. Civil Eng

University of Thessaly (GR, EN, DE, SE)

Ioannis Kratsiotis, Junior project manager

Dipl. Civil Eng

Central Macedonia University (GR, EN)

Dimitrios Balzer, Planning Director

Dipl. Architect (Hospital Design Specialist),

Technical University Berlin - Architecture Hospital (GR, D, EN)

Polykarpos Sidiropoulos, IT manager

MSc in Interactive Multimedia, Westminster University (GR, EN, ES)

Stelios Kouzeleas, Digital Design Consultant

Dipl. Architect Engineer / Post Ph.D in Digital Design / Simulation

Aristotle University of Thessaloniki / Universite de Bordeaux 1 (GR, FR, EN)

Ioannis Tassis, Commissioning - Certification Manager

Mechanical Engineer (GR, ENG)

Daphne Markou, Finance Manager

Higher School of Business Administration, (GR, EN, D)

Athanasios Golfopoulos, Consultant in Quality, Environmental and Health and Safety

Dipl. Mechanical Engineer, Aristotle University of Thessaloniki (GR, EN)

Company / Company profile

Axis Medical is a construction, planning and trading company with many years of experience in the construction market. Our expertise is the health care sector, especially **Operating Theatres, Intensive Care Units, Clean Rooms and Recovery Care Units.**

Our one and only product is

TURN KEY SOLUTION

♦ Construction

- **Vaelma®** - Modular Wall System
- Ceiling System
- Hermetically sealed Doors
- Floor System
- Air Conditioning - Laminar Flow Systems
- Medical gases

♦ Services

- Planning
- Project management
- Certifications (GMP, ISO)
- Medical equipment planning

High experienced and special educated in hospital design scientific staff, ensure high quality products and services at each stage of the project, from design to construction.

As an outcome of our long term experience for quality products in Greece and abroad, we co-operate with Domestic & European firms targeting to the best value for money solution.

Our company attains the following certifications: ISO 9001:2015, ISO 14001:2015, OHSAS 18001:2007/ΕΛΟΤ 1801:2008 and MD: ΔΥ86/Γ.Π.ΟΙΚ./1348/2004 (Distribution of Medical Technological Products)



Turn-key solution

“Our best advertising
is our satisfied customers”

PLANNING

Concept & cost estimation

The very first step to start with a new project, is to visit the site and gather all essential information. Then we organize our next steps and plan the project in terms of:

- Design
- Materials and products
- Human resources
- Construction methods
- Quality standards
- Timetable

Design - 3D - Axonometric & Photorealistic representation

Our design team, consisting of interior designers and architects, planning undertakes the planning of the project in architectural level: complete sets of drawings, mounting - construction designs. It also undertakes the design of new building parts with functional positioning proposals, floor plans and functionality sketches based on international and/or local standards in planning.

Axis Medical also provides, as per request, 3D models in photorealistic or/and axonometric form as part of the solution. Consequently, the customer can have a fully comprehensive idea of the final result.



Turn-key solution / Services

PROJECT MANAGEMENT

— Management

As we work with our company's staff in all stages of design and construction, our engineers are able to manage and organize entirely any project, solving any problem that may arise, and provide feedback to the designers for the best possible solution.

Furthermore, we are strictly following the detailed time schedule to control time and cost issues and avoid unforeseen and unpleasant situations.

— Installation

We have our own installation crew. Our technicians collect on site the raw material proceeding to the construction - installation process guaranteeing a good quality and timesaving job.

— User training - Maintenance - After sales service

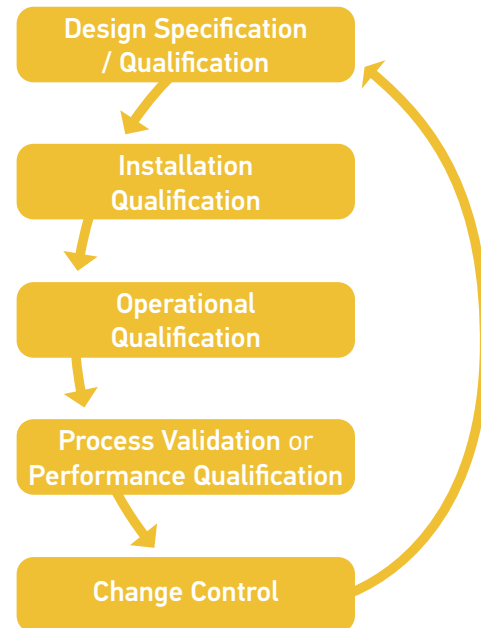
All materials and equipment we provide are accompanied by instructions for end users. Axis Medical provides warranty (duration relative to the product) and after-sales service based and bond on signed contract between the company and the customer.



Certifications

– ISO and GMP

GMP is a system for ensuring that products/services are consistently produced and controlled according to quality standards. Cleanrooms' design & construction must be based on EN ISO 14644 and on the GMP's guideline. The basic principles and application of qualification and validation are described in Annex 15 to the PIC/S and EU Guide to GMP. A GMP certification is assuring that the project meets all the criteria to be functional with the objective of providing the required quality level.



Medical equipment planning

Axis Medical has extensive experience in medical equipment and furniture planning for all types of Health Care Facilities, and an in-depth understanding of clinical project requirements because of our experienced and clinically trained Hospital and medical equipment planners.



Vaelma[®] MODULAR WALL SYSTEM

— General info

Vaelma[®] is a modular wall system which is used in clean rooms and hygiene areas in hospitals clinics etc. Such a system consists of a thoroughly designed substructure which hosts all the needed E/M infrastructure and includes special parts for corners, finishing materials installation and wall elements' mounting.

What is important about **Vaelma[®]** is that it forms a non-porous, hermetic, and flush antibacterial surface which is the main requirement in order to create a clean and controllable environment.

— Substructure - Finishing materials

The Axismedical Modular wall system substructure is suitable for all the four material solutions:

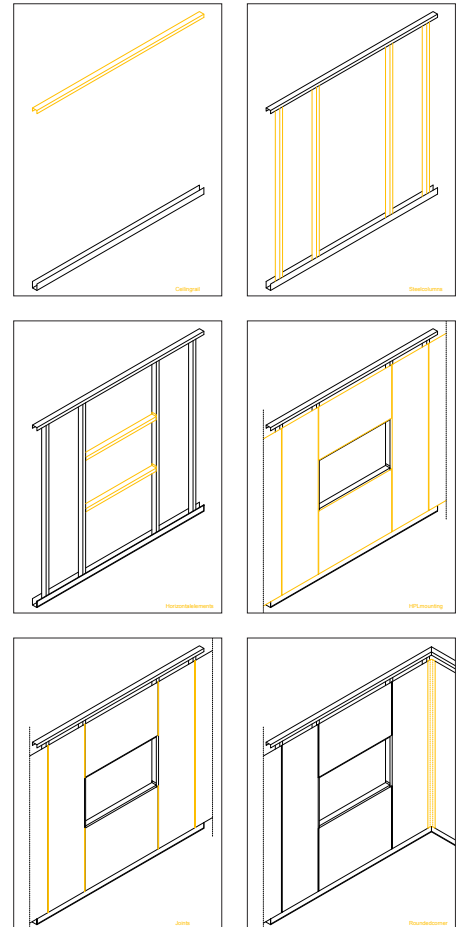
- HPL
- Stainless steel
- Galvanized steel
- Glass
- SMS

This specially constructed steel frame is designed to host the panels in a way that they are perfectly mounted and in the same time independent and individually removable.

Between the panels, at the joints we can install aluminum, rubber or silicon gaskets according to the specifications.

— Technical Features

- Absolute flatness
- Vertical level adjustment of sub frame
- Hermetic sealing
- Sound insulation
- Non-flammable materials
- Ease of disassembly - individuality of panels



HINT

Why modular?

Prefabrication is offering a Flexible, Cost effective and Time effective solution.

The contemporary needs in healthcare infrastructure are becoming more challenging and complicated.

It is crucial to be able to construct a real hygiene space with the state-of-the-art materials and characteristics in few hours, factory treated, well designed before construction on-site.



Turn-key solution / **Construction**

Vaelma[®] MODULAR WALL SYSTEM

— Antibacterial HPL cladding

Vaelma[®] HPL consists of modular panel elements, which are characterized by high chemical and high surface resistance to mechanical influences.

Being fully flexible, the individuality of the panels allow installation and dismantling in a very short time. Joints between the panels are sealed with special silicone, rubber or aluminum rounded parts, meeting all requirements of internationally accepted regulatory standards (such as GMP).

According to each project's individual requirement, cut-outs and electrical channels are prepared already in our production site or in advance (factory fabricated on demand). Detailed and early-phase engineering ensures best quality and an efficient on-site installation process.

Benefits:

- Savings in cleaning
- Simple surface treatment (no Special treatment)
- Minimization of assembly time
- Local repairs possible
- Level differences minimized by vertical joints

Advantages:

- Antibacterial and highly chemical resistant
- Heavy duty surface
- Low maintenance
- Design flexibility
- 10-year product guarantee
- Tested and Certified
- "Green" material





Vaelma[®] MODULAR WALL SYSTEM

— Metal cladding

The 13.5 mm thick tray-type wall panels are made of metal sheet, the edges of which are double- folded. The backs of the tray-type wall panels have a series of drilled holes in the second flange for fixing purposes.

Chipboard panels 12mm thick or gypsum boards 12.5mm are forming the panel backing and create a robust panel. The double bending of the metal (SS or GS) sheet has special holes enabling the panels to be easily fitted to the substructure columns with screws, which are covered by the joint material at a next stage. Mineral wool in customizable thickness and volume, can be inserted to provide thermal and acoustic insulation.

Benefits:

- Savings in the substructure
- Reduction of fasteners
- Minimization of assembly time
- Local repairs possible
- Level differences minimized by vertical joints

Advantages:

- Customized cleanroom wall panels.
- Surface and depth can vary
- Individuality of panels
- Simple installation through simple system
- Provision for E/M works installations

— Solid mineral surface (SMS) cladding

The aluminum hydroxide gives the product a particular strength, the quality of the acrylic resin ensures cleanliness, suitability for contact with substances, water resistance and color stability over time.

It can be seamlessly joined, and a simple thermoforming process allows to create curved surfaces allowing total freedom to the designers' imagination.

The SMS panel is attached to aluminum panels which are produced in the standard width of 1020-1250-1500 mm and variable in length up to 5000 mm. The standard nominal thickness of the ALU panels is: 8-10-15-18 mm.

Advantages:

- Easy to clean and easily disinfected
- Compact in its whole thickness, non-porous
- Available in large slabs
- Jointed with hygienic and inperceptible seams
- Heat and stains resistant
- High chemical resistant
- Self-extinguishing



Turn-key solution / **Construction**

Vaelma[®] MODULAR WALL SYSTEM

— Glass cladding

The wall system consists of a substructure for wall heights up to 4000mm. The glass wall panels can reach a maximum height of 3000mm. Glass is an ideal cleanroom material, because it is completely non-porous, it is resistant to almost all chemicals, it is scratch and dent resistant and adhering dirt can be easily removed. Our experience has shown that glass breakage rarely occurs as the glass panels we provide are secure and oven cooked meaning that they cannot break by hitting the surface. Main advantage, though, is the ability to print any graphics creating an extraordinary visual effect in the room.

Benefits:

- Savings in cleaning
- Simple surface treatment (no Special treatment)
- Minimization of assembly time
- Local repairs possible
- Level differences minimized by vertical joints

Advantages:

- Customized cleanroom wall panels.
- COLORPRINT HD. Digital print Glass
- Individuality of panels
- Simple installation through simple system
- Provision for E/M works installations

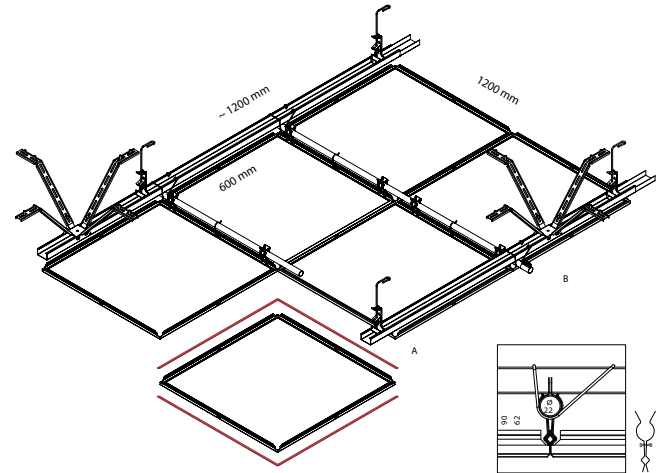


Turn-key solution / Construction

CEILING SYSTEM

General info

The panel modules match with the wall system grid dimensions and each panel can be detached individually.



Technical Features

- Ceiling fixture rail

The substructure consists of support and cross profiles, fixed together to form a rigid grid which can match with the wall panel grid.

- Ceiling Panels

All laboratory requirements regarding hygiene, tightness, ease of installation and surface quality are complied with our systems.

Range of surface finishing materials

- HPL (High Pressure Laminate)
- Stainless Steel grade 304, grade 316 or steel sheet (painted, powder coated)
- Galvanized steel fixed-dimension fixtures antibacterial - hermetically sealed



Turn-key solution / **Construction**

CEILING SYSTEM

— LED Luminaries iP54 and iP65

Luminaries in health care facilities and other rooms of controlled environmental parameters might be built based on variable product solutions. Wide range of differential luminaries in terms of light sources, control systems, emergency lighting systems, power supply etc.

Series of luminaires recommended for clean rooms where increased IP protection degree is required. Version for LED light sources with two types of diffusers: microprismatic and opal available. Luminaire dedicated for installation in recessed and 600×600 ceiling with visible grid and with OPAL diffuser.

Economically effective LED luminaire of high endurance designed for clean environments and industrial areas with need for higher protection rate. Sandblasted and tempered glass provides a high degree of protection of light sources and uniform light distribution.



HERMETICALLY SEALED DOORS

— Hospital doors & windows

Hermetic doors create a controlled environment by reducing air leakage and therefore the potential for cross contamination. They are specifically designed for use in any areas where air permeability, hygiene, and noise insulation are critical, such as operating theaters, laboratories, clean rooms, and silent areas. Some specialized facilities have very high requirements for doors— for example, X-ray rooms require radiation protection. Operating theaters and intensive care units need to be hermetically sealed to prevent air contamination and enable special equipment to be used safely.



- 1 Compact, powerful, and intelligent automation unit
- 2 Canopy with integrated sensors
- 3 Door leaf surface with smart nanolaminates, lightweight filling
- 4 Ergonomic handle provides extra leverage
- 5 Flexible silicone sealing

Turn-key solution / **Construction**

FLOOR SYSTEM

— Antistatic floors

Dissipative flooring, antistatic ($< 2\text{kV}$), flexible homogeneous floor coverings available in both sheet and tile form. Calendared and compacted with permanent anti-static properties. They act as a continuous dissipater $106 \leq R_t \leq 108$ (EN 1081) and comply with EN 649.

— Conductive floors

The conductive floors properly installed (with a grid bronze and grounding) alienate any electrostatic charge created. Used in areas with very high standards of safety and sensitivity of electronic equipment such as Operating Theatres. The standard electrical resistance is $5 \times 10^4 \leq R_t \leq 10^6$ (EN 1081). It complies with EN 649.



Turn-key solution / **Construction**

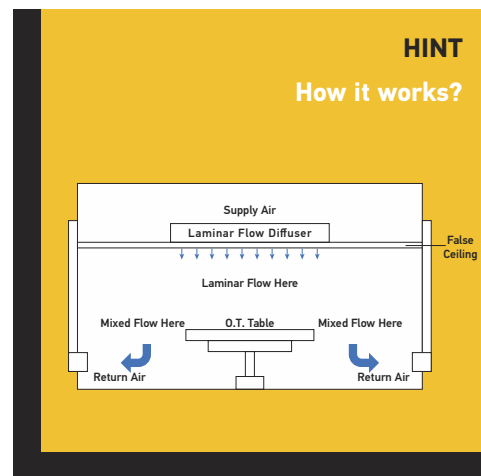
AIR CONDITIONING

- LAMINAR FLOW SYSTEM

Laminar Flow systems works with a vertical, turbulence-free displacement flow.

— Our expertise:

- Volume estimation, suggest the proper product for every case.
- Supply and installation of the basic mechanical equipment which is composed of units and systems manufactured abroad, the products of which are traded by the company, or by any other domestic or foreign manufacturer for the proper construction of each project.
- Supply of secondary equipment and materials as well as complete construction.
- Tests, inspections, measurements and adjustments of the installation for delivery in normal operation.
- Preventive maintenance (service) of the installations after the construction, on the basis of scientifically drawn-up program for the maintenance of the equipment and systems by specialized personnel of the company.
- Customized solutions according to the specs.



Turn-key solution / **Construction**

MEDICAL GASES

AXISMEDICAL can offer all necessary parts for the installation of a complete medical gas system.

— **Medical gas terminal units / outlets / pendants / BHU**

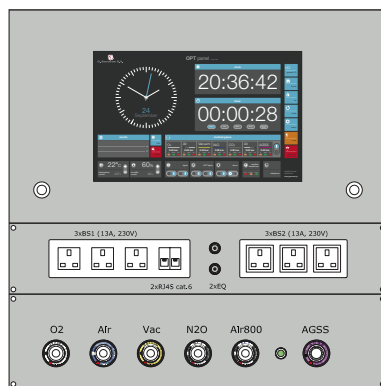


Turn-key solution / Construction

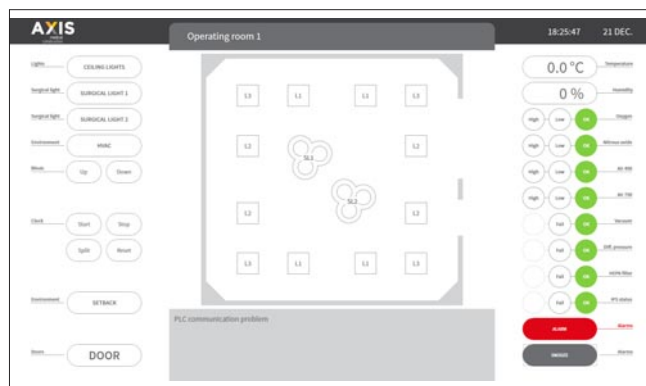
VISUALIZATION

— OPT control panel

OPT Control Panel, is the central device for providing all the necessary control signals, alarms and information required in an Operating Theater. OPT Control Panel allows the medical personnel to have only one, familiar source of information and provides easy access to technical personnel for inspecting and maintenance of several different subsystems, without disrupting the wall infection integrity.



Touch panel / sockets / gas outlets



Monitor control panel

— OT Monitors / Medical IT solutions / Video integration

Main characteristics

- Monitor sizes 19" to 75"
- Variable housing technology (flush mounted, wall mounted etc)
- Optimized picture quality (up to 4K)
- Wide range of extensions
- Certified medical device
- Hygienic surfaces easily cleanable

Wall-mounted workstations in the operating theater for applications such as KIS, RIS, PACS (digital x-ray film viewer), control and navigation workstation for room control and video management and universal wall monitors as image targets for video endoscopy or PACS.



Selected Projects



“The perfect project
is a teamwork’s result”

Projects / Selected projects

— Lotos Private Clinic, 3 general operating theatres, Chelyabinsk, Russia

It is a modern private general clinic in Chelyabinsk. The planning was proceeded in 3 weeks and the project duration on site was 25 days. Axis Medical installed in this general clinic Turn Key Solution in 3 O.T.s, scrub-up area, recovery room and utility rooms (incl. HPL cladding, hermetically sealed doors, antistatic conductive floor covering, false ceiling system - LFS, lighting fixtures, antibacterial ceiling material etc).

Client: Lotos Clinic
Region: Chelyabinsk, Russia
Area: 180 sq.m.
Use: General clinic
Year of construction: 2011



Projects / Selected projects

— Assisting Nature, IVF center, Thessaloniki, Greece

It is a sophisticated unit, the only one in Northern Greece which has a modern embryology laboratory, and provides services in the field of embryology, diagnosis and treatment of sub-fertility. It is a very elegant area of 750 sq.m. including a state-of-art embryology laboratory and high quality daycare spaces for patients and attendants.

Client: Assisting Nature

Region: Thessaloniki, Greece

Area: 750 sq.m.

Use: IVF center

Year of construction: 2013



Projects / Selected projects

— Camark Italia, production unit for medical stitches, Axioupolis, Greece

Construction of production unit for medical stitches
Planning, building permission, operational permission, architectural design and construction of the production plant as well as the warehouse, offices and reception - visitors areas. The Lab area design is based on GMP standards and constructed as GMP certified. The laboratory areas' grade is D constructed with a grade C potential.

Client: Camark Italia

Region: Axioupolis, Greece

Area: 1100 sq.m.

Use: Laboratory

Year of construction: 2017



Projects / Selected projects

— Cleanroom laboratories, Celixir, Stratford, the UK

Design and construction based on GMP standards lab (Clean room grade D, C and A-B). It is a pharmaceutical plant following the GMP rules in the whole construction and production procedure. Lab rooms: Quality control, cryopreservation, Grade change interlocks, production rooms grade C, production rooms grade A-B. Other rooms: offices, reception, meeting rooms, personnel rest rooms, warehouse.

Client: Celixir UK

Region: Stratford upon Avon, UK

Area: 250 sq.m.

Use: Laboratory

Year of construction: 2017



Projects / Selected projects

— Obstetrics & Gynecology Hospital, NICU department renovation, Sakakah KSA

Modular Wall System with HPL panels in different colors and designs customized by our company in cooperation with the MoH engineers, metal antibacterial false ceiling, lighting fixtures IP54 impermeability rated, Automatic sliding Hermetical Doors, Smart glass installation in all NICU rooms for privacy control, Scrub units, Digital printed HPL panels for wall decoration with antibacterial standards, Design and procurement of reception desk for the Nurse station.

Client: Wahran Est.F.C.

Region: Sakaka, KSA

Area: 650 sq.m.

Use: NICU

Year of construction: 2018



Projects / Selected projects

— Children's Oncology Unit - GMP Laboratory for cell and gene therapy

The project included the design and construction based on GMP standards lab (Clean room grade D, C and A-B). It is a lab following the GMP rules in the whole construction and work procedure.

Client: ELPIDA association of friends of children with cancer

Region: Agia Sophia children's hospital, Athens, Greece

Area: 60 sq.m.

Use: GMP laboratory for bone marrow transplant unit

Year of construction: 2019-2020



Projects / **Selected projects**

— **GH of Volos, Digital OR construction, Volos, Greece**

Procurement and installation of the modular wall system with HPL panels, and digital print glass panels which is an outstanding innovation for Greek public hospitals, the construction of flooring, false ceiling, LED impermeable lighting fixtures dimmable in white and blue color, as well as minor improvements regarding the ventilation, power and medical gas outlets.



Client: Proton SA

Region: Volos, Greece

Area: 400 sq.m.

Use: Operating theatre

Year of construction: 2019



Projects / Selected projects

— AHEPA University Hospital, Renovation of Angiography Department, Thessaloniki, Greece

Renovation of the angiography department in AHEPA Hospital in Thessaloniki. The project was a donation from the Stavros Niarchos Foundation through M.A.Z.I, a Non-Governmental Organization and included the procurement and installation of the modular wall system with HPL panels, the general construction of flooring, false ceiling, lighting fixtures, wall partitioning and painting, lead lining for x-ray shielding, special lead doors and lead glass windows as well as the laminar flow system.



Client: Proton SA

Region: Thessaloniki, Greece

Area: 135 sq.m.

Use: Angiography and utility rooms

Year of construction: 2018



Projects / **Selected projects**

— IVF Embryolab - Operating theatres and Laboratories renovation

The project included a turn-key renovation of the embryo-transport areas (OTs), the embryology Lab, the Andrology Lab and the Cryopreservation rooms. The project is constructed according to the GMP annexes related to the cleanroom constructions. The scope included VAELEMA© system, automatic doors, hermetic antibacterial ceilings and lighting fixtures, antistatic and conductive floor covering, cleanroom HVAC system installation with HEPA, VOC and UV filters, medical gas installations and DP monitoring.



Client: Embryolab Fertility Clinic

Region: Thessaloniki, Greece

Area: 140 sq.m.

Use: IVF laboratories and
operating theatres

Year of construction: 2019



Projects / **Selected projects**

— **RSUD Kepanjen Public Hospital - 2 Modular Operating Theatres**

The project included a turn-key installation of 2 Modular operating theatres. The scope of work included VAELEMA © system with antibacterial HPL panels as well as digital printed glass, false ceiling with antibacterial clip-in tiles, IP65 lighting fixtures, lead lining for x-ray shielding, touch screen surgical control panel, Medical Gas Outlets and Laminar Flow System with return ducts suitable for ISO 6, conductive floor covering, lead lined automatic hermetic doors and HPL built-in cabinets



Client: Pt. Megah Alkesindo

Region: Kepanjen, East Java, Indonesia

Area: 100 sq.m.

Use: Operating theatres

Year of construction: 2019



Projects / Selected projects

— Pharmaceutical Cannabis production plant

Laboratories construction according to GMP standards. Turnkey installation of all the laboratories for the processing of the product. The scope of work includes Modular Wall System with antibacterial HPL panels, false ceiling with antibacterial clip in tiles, iP54 lighting fixtures, HVAC system according to the GMP standards with HEPA filters, positive differential pressure between the cleanrooms and the unclassified areas, critical areas will be constructed as Grade D and Grade C. We also provided and installed transfer hatches between for the material transfer and cleanroom doors. Finally, Axismedical was responsible for all the GMP folder regarding the construction (DQ, IQ, OQ) and the final certification of the facility

Client: King Field Doo
Region: Ohrid, N. Macedonia
Area: 250 sq.m.
Use: Pharmaceutical Cannabis production plant
Year of construction: 2020



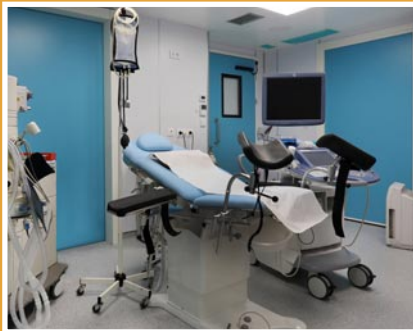
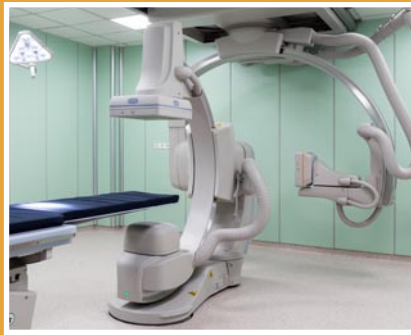
Projects / Reference list

GREECE

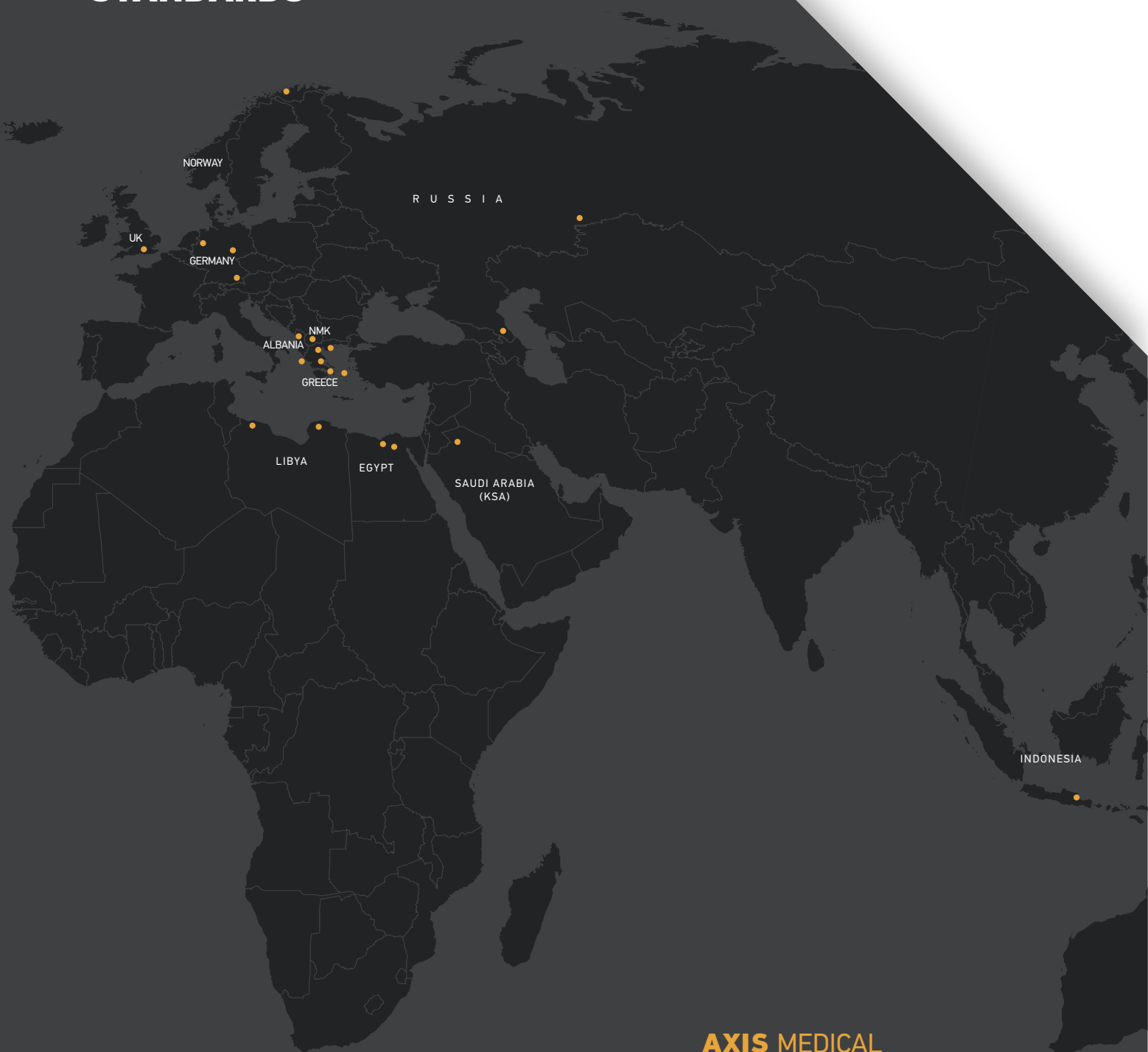
- ▶ EUROMEDICA "Geniki Kliniki" Thessaloniki (1800m² HPL for ICU & OR's)
 - ▶ EUROMEDICA Kliniki "Kianos Stavros" Thessaloniki (480m² HPL for OR's)
 - ▶ EUROMEDICA "Geniki Kliniki" Lamia
 - ▶ EUROMEDICA Kliniki "ATHINEON" Athens
 - ▶ Diagnostic center EUROMEDICA, Thessaloniki (turn key construction project (no HPL))
 - ▶ "IPPOKRATES" General Clinic, Athens (Doctor's house (320m² HPL OR's))
 - ▶ General Clinic "ZILAKOU", Piraeus (2 operating rooms HPL)
 - ▶ 401 Military Hospital of Athens (1300m² HPL OR's)
 - ▶ Latsio burns center, Athens (800m² HPL wall cladding)
 - ▶ "OLYMPIO THERAPEUTIRIO", Patras (1100m² HPL OR's)
 - ▶ Aglaia Kyriakou Child Hospital, Athens (1200m² HPL OR's)
 - ▶ General Hospital "EVAGKELISMOS", Athens (4 HPL OR's)
 - ▶ General Hospital "NIMITS", Athens (4 OR as turnkey projects)
 - ▶ General Hospital "G. GENNIMATAS", Thessaloniki (3 children HPL OR)
 - ▶ General Hospital "PAPANIKOLAOU", Thessaloniki (2 HPL OR in cardiology department)
 - ▶ Clinic "YGIA", Larisa (4 HPL OR)
 - ▶ IKA "PANAGIA", Thessaloniki (turn-key solution 4 OR)
 - ▶ Private clinic MASTORAS, Corfu (complete renovation of the surgery department, Numerous works and every type of furnishing works and solutions (doors - closets - lockers - wall cladding)
 - ▶ General hospital of Kithira island (2 HPL OR, walls, doors, control panel, ceiling, flooring)
 - ▶ Mediterraneo Private Hospital (6 HPL OR)
 - ▶ IVF center "Assisting nature" (750m² construction from A-Z in 2 months)
 - ▶ Ophthalmic Center OPHTHALMICA, Thessaloniki (construction of OR with gypsum board)
 - ▶ Arogi, rehabilitation Center, Thessaloniki
 - ▶ Ophthalmic clinic "Laser & Ophthalmos", turn-key project – 5 OR 750m² in total, Thessaloniki
 - ▶ Kliniki Thermis, whole building wall protection system (500m)
 - ▶ Clean room for Physiology lab in Aristotle University of Thessaloniki (HPL and utility rooms)
 - ▶ Celixir - Pharmaceutical laboratories (Turnkey project), Thermi
 - ▶ General Hospital Papanikolaou - cell therapy lab. renovation (GMP Lab turnkey project), Thessaloniki
 - ▶ Camark - Construction of production unit for medical stitches (Turnkey project), Axioupolis
 - ▶ Public hospital of Chalkida (Wall protection system - 10.000m)
 - ▶ Private one day clinic in Corfu (Turn key project)
 - ▶ General Hospital of Santorini, CT department construction (turnkey project)
 - ▶ General hospital of Korinthos (CT scanner installation)
 - ▶ General clinic of Athens (2 OR vinyl cladding)
 - ▶ AHEPA general hospitals (CT scanner installation)
 - ▶ General hospital of Volos (1 digital OR construction)
- Stavros Niarchos Foundation projects:*
- ▶ Ippokratio General Hospital, Hemodynamic lab, ICU and OTs reconstruction
 - ▶ ICU in Saint Dimitrios Hospital SKG
 - ▶ ICU in G. Gennimatas Hospital SKG
 - ▶ AHEPA Hospital, Total renovation Preoperative surgery Dept.
 - ▶ GH of Kavala, γ Camera installation in cooperation with GE Greece
 - ▶ X-ray rooms constructions across the country in cooperation with Siemens Greece
 - ▶ IASO Thessaly, IVF department renovation
 - ▶ Euroclinic Athens, ICU renovation, negative pressure rooms construction
 - ▶ Vioiatriki, Ilioupoli SKG (Diagnostics facility)
 - ▶ Childrens hospital Agia Sophia, athens (GMP laboratory for bone marrow transplant unit)
 - ▶ Embryolab Fertility Clinic (OT and Lab renovation)
 - ▶ Vioiatriki, Ampelokipi SKG (Diagnostics facility)

ABROAD

- ▶ General Hospital of Misrata (Libya) (1500m² of OR area)
- ▶ Emergency Hospital of Misrata (Libya) (650m² of OR area)
- ▶ OBD clinic of Misrata (Libya) (180m² of OR area, laboratory benches with corian surface)
- ▶ Shahat hospital (Libya) (2 OR)
- ▶ Chelyabinsk private clinic (Russia) (3 OR)
- ▶ Military hospital of Alexnadria (Egypt) (2 OR)
- ▶ Saint Paolo hospital of Cairo (Egypt) (2 OR)
- ▶ Cleanroom laboratory construction (UK) (250m²)
- ▶ Maternity hospital of Sakaka (KSA) (650m² NICU renovation with modular wall system)
- ▶ Private Ophthalmological clinic in Albania (1 OR)
- ▶ Hospital of Kirkenes (Norway) Facade 10.000m²
- ▶ Pharmaceutical Cannabis production plant (NMK) (155m² of GMP lab area)
- ▶ Kepanjen Public hospital (Indonesia) (2 OR)
- ▶ Iasi General hospital (Romania) (2 OR)
- ▶ Lincoln American School of Accra (Ghana) (HPL façade 2700m²)
- ▶ Ophthalmology clinic renovation (Albania)



BUILDING STANDARDS



AXIS
medical
construction

AXIS MEDICAL

4, G. Karavaggi Str. / 551 33 Kalamaria

Thessaloniki / Greece

T: +30 2313 036458 / F: +30 2313 036451

info@axismedical.gr

www.axismedical.gr